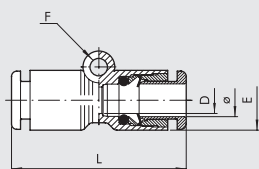




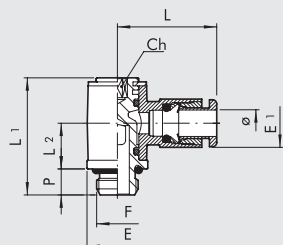
RACORES AUTOMÁTICOS DE TECNOPOLÍMERO PARA TUBOS DE mm Y ROSCAS G (BSP) o MÉTRICAS P N E U M A T I C

RECTO INTERMEDIO TECNOPOLÍMERO (R19)



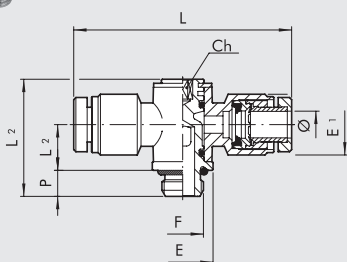
Código	Ref.	Ø	E	L	D	F
2019001	RL19	4	9.2	30.4	3	3.3
2019002	R19	5	14	33.5	4	-
2019003	RL19	6	11.3	33	5	3.3
2019004	RL19	8	13.8	36.2	6.5	3.3
2019005	RL19	10	16	38	8.5	3.3
2019006	RL19	12	19.5	40	10.5	3.3

TORNILLO MACHO BANJO SIMPLE GIRATORIO TECNOPOLÍMERO (R20)



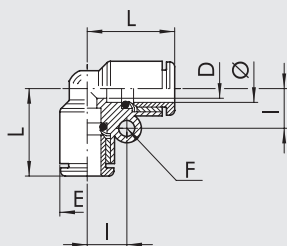
Código	Ref.	Ø	F	Ch	P	L	L1	L2	E	E1
2020001	RL20	4	M5	2	4	18.7	18.4	9.1	8	9.2
2020002	RL20	4	1/8	3	6	21	24.9	12.3	14	9.2
2020003	R20	5	M5	2	4	21.5	18.8	8.5	9.9	13.5
2020004	R20	5	1/8	3	6	23	27	10.5	14	13.5
2020016	RL20	6	M5	2	4	20.8	18.4	9.1	8	11.3
2020005	RL20	6	1/8	3	6	22.3	24.9	12.3	14	11.3
2020007	RL20	6	1/4	4	8	24.3	29.4	14.3	18	11.3
2020006	RL20	8	1/8	3	6	25.6	24.9	12.3	14	13.8
2020008	RL20	8	1/4	4	8	27.2	29.4	14.3	18	13.8
2020009	RL20	10	1/4	4	8	28.6	29.4	14.3	18	16
2L20017	RL20	10	3/8	5	9	30.5	35.6	15.3	22	16
2020010	RL20	12	1/4	4	8	31	29.4	14.3	18	19.5
2020011	RL20	12	3/8	5	9	32.4	35.6	17.5	22	19.5
2020012	RL20	12	1/2	8	11	34	40.8	19.2	26	19.5

TORNILLO MACHO BANJO DOBLE GIRATORIO TECNOPOLÍMERO (R20/A)



Código	Ref.	Ø	F	Ch	P	L	L1	L2	E	E1
2020A01	R20/A	4	M5	2	4	40	16.8	6.5	9.9	10.9
2020A02	R20/A	4	1/8	3	6	45	27	10.5	14	12.5
2020A03	R20/A	5	M5	2	4	43	18.8	8.5	9.9	13.5
2020A04	R20/A	5	1/8	3	6	46	27	10.5	14	13.5
2020A05	R20/A	6	1/8	3	6	45	27	10.5	14	15
2020A07	R20/A	6	1/4	4	8	48	31.5	11.5	18	15
2020A06	R20/A	8	1/8	3	6	51	27	10.5	14	16.3
2020A08	R20/A	8	1/4	4	8	54	31.5	11.5	18	16.3
2020A09	R20/A	10	1/4	4	8	64	31.5	11.5	18	18.5
2020A10	R20/A	12	1/4	4	8	64	31.5	11.5	18	21
2020A11	R20/A	12	3/8	5	9	68	36	13.5	22	21
2020A12	R20/A	12	1/2	8	11	72	42	16.2	26	21

L INTERMEDIO TECNOPOLÍMERO (R21)



Código	Ref.	Ø	L	D	E	I	F
2L21001	RL21	4	16.7	2.5	9.2	7.2	3.3
2021002	R21	5	20	3.5	13.5	-	-
2L21003	RL21	6	19	4.2	11.3	8.2	3.3
2L21004	RL21	8	21.4	6.2	13.8	9.6	3.3
2021005	RL21	10	24	8.5	16	10.9	3.3
2021006	RL21	12	25.8	10.5	19.5	12.5	3.3

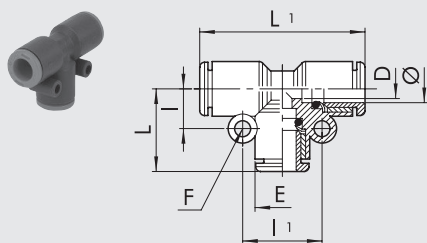
RACORES AUTOMÁTICOS DE TECNOPOLÍMERO PARA TUBOS DE mm Y ROSCAS G (BSP) o MÉTRICAS

RACORES



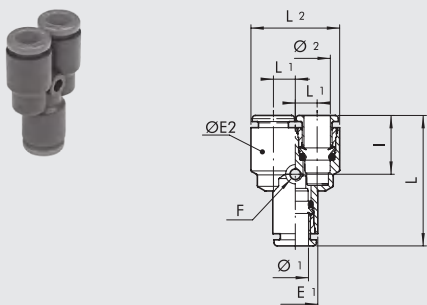
RACORES AUTOMÁTICOS DE TECNOPOLÍMERO PARA TUBOS DE mm Y ROSCAS G (BSP) o MÉTRICAS

T INTERMEDIO TECNOPOLÍMERO (R22)



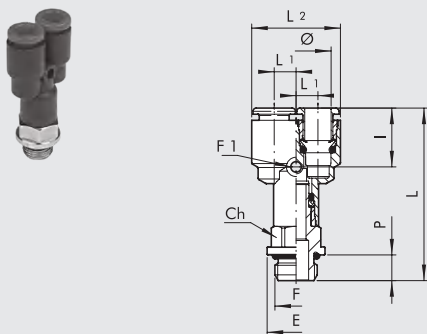
Código	Ref.	Ø	L	L1	D	E	I	I1	F
2122001	RL22	4	16.7	33.4	2.5	9.2	7.2	14.4	3.3
2022002	R22	5	20	40	3.5	13.5	-	-	-
2122003	RL22	6	19	38	4.2	11.3	8.2	16.4	3.3
2122004	RL22	8	21.4	42.8	6.2	13.8	9.6	19.2	3.3
2022005	RL22	10	24	48	8.5	16	10.9	21.8	3.3
2022006	RL22	12	25.8	51.6	10.5	19.5	12.5	25	3.3

Y TECNOPOLÍMERO (R23)



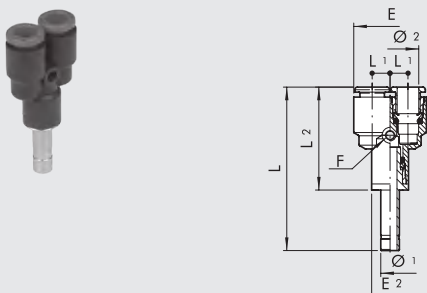
Código	Ref.	Ø1	Ø2	L	L1	E1	ØE2	I	F	L2
2023001	RL23	4	4	32.9	5	9.2	9.2	14.8	3.3	19.2
2023002	R23	5	5	35.5	6.5	13.5	13.5	-	-	26.5
2023003	RL23	6	6	35.5	5.8	11.3	11.3	15	3.3	22.8
2023004	RL23	8	8	39.5	7.2	13.8	13.8	15.8	3.3	28.2
2123005	RL23	10	10	43.1	8.3	16	16	17.4	3.3	32.6
2123006	RL23	12	12	48	10	19.5	19.5	18	3.3	39.5
2123301	RL23	6	4	34.2	5	11.3	9.2	14.8	3.3	19.2
2123303	RL23	8	6	37.8	5.8	13.8	11.3	15	3.3	22.8
2123306	RL23	10	8	40.4	7.2	16	13.8	15.8	3.3	28.2
2123309	RL23	12	10	44.2	8.3	19.5	16	17.4	3.3	32.6

Y MACHO TECNOPOLÍMERO (R23/M)



Código	Ref.	Ø	F	L	L1	L2	I	Ch	P	E	F1
2123401	RL23/M	4	M5	38.7	5	19.2	14.8	9	4	9.9	3.3
2123402	RL23/M	4	1/8	42.6	5	19.2	14.8	12	6	14	3.3
2123403	RL23/M	4	1/4	46.6	5	19.2	14.8	14	8	18	3.3
2123406	RL23/M	6	1/8	44.9	5.75	22.8	15	12	6	14	3.3
2123407	RL23/M	6	1/4	47.9	5.75	22.8	15	14	8	18	3.3
2123409	RL23/M	8	1/8	48.4	7.2	28.2	15.8	14	6	15	3.3
2123410	RL23/M	8	1/4	52.8	7.2	28.2	15.8	14	8	18	3.3
2123412	RL23/M	8	3/8	54.4	7.2	28.2	15.8	17	9	22	3.3
2123413	RL23/M	10	1/4	53.8	8.3	32.6	17.4	16	8	18	3.3
2123415	RL23/M	10	3/8	56	8.3	32.6	17.4	17	9	20	3.3
2123419	RL23/M	12	3/8	62	10	39.5	18	19	9	22	3.3
2123420	RL23/M	12	1/2	62.3	10	39.5	18	22	11	26	3.3

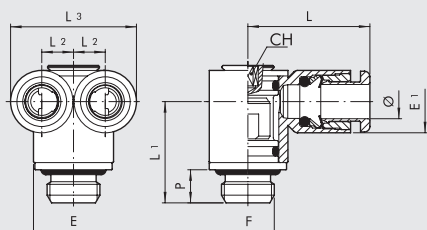
Y CON ADAPTADOR TECNOPOLÍMERO (R24)



Código	Ref.	Ø1	Ø2	L	L1	L2	E1	E2	I	F
2024001	RL24	4	4	46.9	5	29.7	9.2	9.2	14.8	3.3
2024003	RL24	6	6	49.7	5.75	32	11.3	11.3	15	3.3
2124004	RL24	8	8	55.1	7.2	35.9	13.8	13.8	15.8	3.3
2124005	RL24	10	10	63.1	8.3	39.2	16	16	17.4	3.3
2124006	RL24	12	12	70.5	10	44	19.5	19.5	18	3.3
2124301	RL24	6	4	48.4	5	30.7	9.2	11.3	14.8	3.3
2124303	RL24	8	6	53.4	5.75	34.2	11.3	13.8	15	3.3
2124306	RL24	10	8	60.4	7.2	36.6	13.8	16	15.8	3.3
2124309	RL24	12	10	66.7	8.3	40.2	16	19.5	17.4	3.3

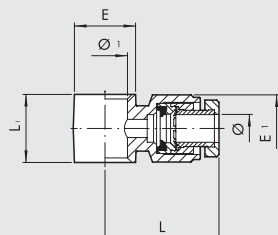


Y LATERAL MACHO TECNOPOLÍMERO (R25)



Código	Ref.	Ø	F	L	L1	L2	L3	E	E1	CH	P
2L25001	RL25	4	M5	17.7	13.1	5	19.2	8	9.2	2	4
2L25002	RL25	4	M7	17.7	14.6	5	19.2	9.8	9.2	3	5
2L25003	RL25	4	1/8	17.7	16.5	5	19.2	13	9.2	3	6
2L25004	RL25	6	1/8	23	18.3	5.75	22.8	14	11.3	3	6
2L25005	RL25	6	1/4	23	21.2	5.75	22.8	16.4	11.3	4	8
2L25008	RL25	8	1/4	25.8	22.2	7.2	28.2	18	13.8	4	8
2L25009	RL25	8	3/8	25.8	23.8	7.2	28.2	20	13.8	5	9

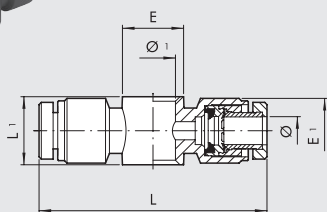
BANJO SIMPLE TECNOPOLÍMERO (R28)



Código	Ref.	Ø	Ø1	L	L1	E	E1
2012102	R28	4	1/8	22.5	17	15	12.5
2012104	R28	5	1/8	23	17	15	13.5
2012106	R28	6	1/8	22.5	17	15	15
2012107	R28	6	1/4	24	19	18	15
2012108	R28	8	1/8	25.5	17	15	16.5
2012109	R28	8	1/4	27	19	18	16.5
2012110	R28	8	3/8	29	22	21.5	16.5
2012111	R28	10	1/4	32	19	18	18.5
2012112	R28	10	3/8	32	22	21.5	18.5
2012113	R28	12	1/4	32	19	18	21
2012114	R28	12	3/8	34	22	21.5	21
2012115	R28	12	1/2	36	24	26	21

Para los tornillos Serie D ver pag. D2.15

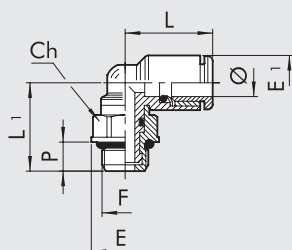
BANJO DOBLE TECNOPOLÍMERO (R29)



Código	Ref.	Ø	Ø1	L	L1	E	E1
2013102	R29	4	1/8	45	17	15	12.5
2013104	R29	5	1/8	46	17	15	13.5
2013106	R29	6	1/8	45	17	15	15
2013107	R29	6	1/4	48	19	18	15
2013108	R29	8	1/8	51	17	15	16.5
2013109	R29	8	1/4	54	19	18	16.5
2013110	R29	8	3/8	58	22	21.5	16.5
2013111	R29	10	1/4	64	19	18	18.5
2013112	R29	10	3/8	64	22	21.5	18.5
2013113	R29	12	1/4	64	19	18	21
2013114	R29	12	3/8	68	22	21.5	21
2013115	R29	12	1/2	72	24	26	21

Para los tornillos Serie D ver pag. D2.15

L MACHO GIRATORIO TECNOPOLÍMERO (R34)



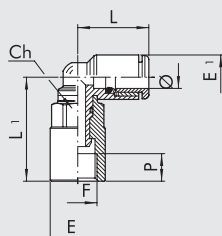
Código	Ref.	Ø	F	Ch	P	L	L1	E	E1
2L34001	RL34	4	M5	8	4	16.4	15.2	9	9.2
2L34020	RL34	4	M7	8	5	16.4	16.2	9.8	9.2
2L34002	RL34	4	1/8	12	6	16.4	17.2	14	9.2
2L34003	RL34	4	1/4	14	8	16.4	20.1	18	9.2
2L34006	RL34	6	M5	8	4	18	16.3	9	11.3
2L34021	RL34	6	M7	9	5	19	17.5	9.9	11.3
2L34007	RL34	6	1/8	12	6	19	18.3	14	11.3
2L34008	RL34	6	1/4	14	8	19	21.2	18	11.3
2L34009	RL34	8	1/8	12	6	20.2	19.5	14	13.8
2L34010	RL34	8	1/4	14	8	20.2	22.4	18	13.8
2L34011	RL34	8	3/8	17	9	20.2	24.4	22	13.8
2L34013	RL34	10	1/4	14	8	23.3	23.5	18	16
2L34014	RL34	10	3/8	17	9	23.3	25.6	22	16
2L34016	RL34	12	3/8	17	9	25.2	27.3	22	19.5
2L34017	RL34	12	1/2	19	11	25.2	30.3	26	19.5

RACORES AUTOMÁTICOS DE TECNOPOLÍMERO PARA TUBOS DE mm Y ROSCAS G (BSP) o MÉTRICAS

RACORES

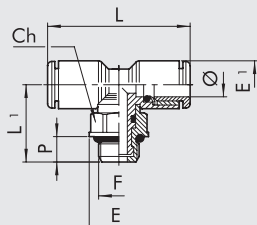


L HEMBRA GIRATORIO TECNOPOLÍMERO (R34/F)



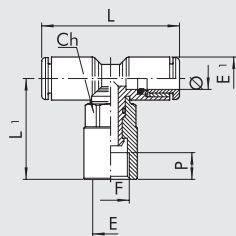
Código	Ref.	Ø	F	Ch	E	E1	L	L1	P
2L34F01	RL34/F 4	M5	8	9	9.2	16.4	15.3	4	
2L34F05	RL34/F 4	1/8	12	14	9.2	16.4	20.9	7	
2L34F06	RL34/F 6	M5	8	9	11.3	18	16.4	4	
2L34F07	RL34/F 6	1/8	12	14	11.3	19	26.5	7	
2L34F08	RL34/F 6	1/4	14	17	11.3	19	28.2	8	
2L34F09	RL34/F 8	1/8	12	14	13.8	20.2	27.7	7	
2L34F10	RL34/F 8	1/4	14	17	13.8	20.2	29.4	8	
2L34F13	RL34/F 10	1/4	14	17	16	23.3	33	8	
2L34F14	RL34/F 10	3/8	17	21	16	23.3	38	10	
2L34F16	RL34/F 12	3/8	17	21	19.5	25.2	40.3	10	
2L34F17	RL34/F 12	1/2	19	23.8	19.5	25.2	42.8	11	

T CENTRAL MACHO GIRATORIO TECNOPOLÍMERO (R35)



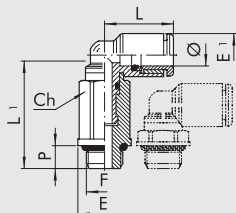
Código	Ref.	Ø	F	Ch	P	L	L1	E	E1
2L35001	RL35 4	M5	8	4	32.8	15.2	9	9.2	
2L35020	RL35 4	M7	8	5	32.8	16.2	9.8	9.2	
2L35002	RL35 4	1/8	12	6	32.8	17.2	14	9.2	
2L35003	RL35 4	1/4	14	8	32.8	20.1	18	9.2	
2L35006	RL35 6	M5	8	4	36	16.3	9	11.3	
2L35007	RL35 6	1/8	12	6	38	18.3	14	11.3	
2L35008	RL35 6	1/4	14	8	38	21.2	18	11.3	
2L35009	RL35 8	1/8	12	6	40.4	19.5	14	13.8	
2L35010	RL35 8	1/4	14	8	40.4	22.4	18	13.8	
2L35011	RL35 8	3/8	17	9	40.4	24.4	22	13.8	
2L35013	RL35 10	1/4	14	8	46.6	23.5	18	16	
2L35014	RL35 10	3/8	17	9	46.6	25.6	22	16	
2L35016	RL35 12	3/8	17	9	50.4	27.3	22	19.5	
2L35017	RL35 12	1/2	19	11	50.4	30.3	26	19.5	

T CENTRAL HEMBRA GIRATORIO TECNOPOLÍMERO (R35/F)



Código	Ref.	Ø	F	Ch	E	E1	L	L1	P
2L35F01	RL35/F 4	M5	8	9	9.2	32.8	15.3	4	
2L35F06	RL35/F 6	M5	8	9	11.3	36	16.4	4	
2L35F07	RL35/F 6	1/8	12	14	11.3	38	26.5	7	
2L35F08	RL35/F 6	1/4	14	17	11.3	38	28.2	8	
2L35F09	RL35/F 8	1/8	12	14	13.8	40.4	27.7	7	
2L35F10	RL35/F 8	1/4	14	17	13.8	40.4	29.4	8	
2L35F13	RL35/F 10	1/4	14	17	16	46.6	33	8	
2L35F14	RL35/F 10	3/8	17	21	16	46.6	38	10	
2L35F16	RL35/F 12	3/8	17	21	19.5	50.4	40.3	10	
2L35F17	RL35/F 12	1/2	19	23.8	19.5	50.4	42.8	11	

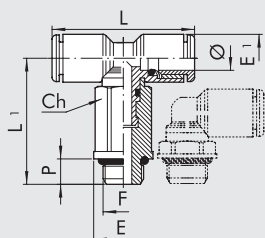
L MACHO GIRATORIO PROLONGADO TECNOPOLÍMERO (R36)



Código	Ref.	Ø	F	Ch	P	L	L1	E	E1
2L36001	RL36 4	M5	8	4	16.4	26.7	9	9.2	
2L36020	RL36 4	M7	8	5	16.4	27.7	9.8	9.2	
2L36002	RL36 4	1/8	12	6	16.4	25.3	14	9.2	
2L36006	RL36 6	M5	8	4	18	27.8	9	11.3	
2L36021	RL36 6	M7	9	5	18	29.3	9.9	11.3	
2L36007	RL36 6	1/8	12	6	19	30.9	14	11.3	
2L36008	RL36 6	1/4	14	8	19	33.2	18	11.3	
2L36009	RL36 8	1/8	12	6	20.2	32.1	14	13.8	
2L36010	RL36 8	1/4	14	8	20.2	34.4	18	13.8	
2L36012	RL36 10	1/4	14	8	23.3	38	18	16	

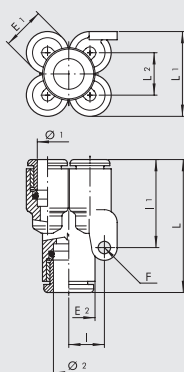


T CENTRAL MACHO GIRATORIO PROLONGADO TECNOPOLÍMERO (R37)



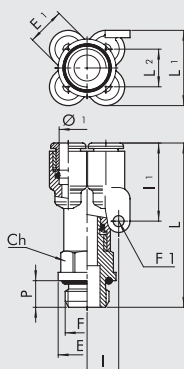
Código	Ref.	Ø	F	Ch	P	L	L1	E	E1
2L37001	RL37	4	M5	8	4	32.8	26.7	9	9.2
2L37020	RL37	4	M7	8	5	32.8	27.5	9.8	9.2
2L37002	RL37	4	1/8	12	6	32.8	25.3	14	9.2
2L37006	RL37	6	M5	8	4	36	27.8	9	11.3
2L37007	RL37	6	1/8	12	6	38	30.9	14	11.3
2L37008	RL37	6	1/4	14	8	38	33.2	18	11.3
2L37009	RL37	8	1/8	12	6	40.4	32.1	14	13.8
2L37010	RL37	8	1/4	14	8	40.4	34.4	18	13.8
2L37012	RL37	10	1/4	14	8	46.6	38	18	16

Y DOBLE TECNOPOLÍMERO (R42)



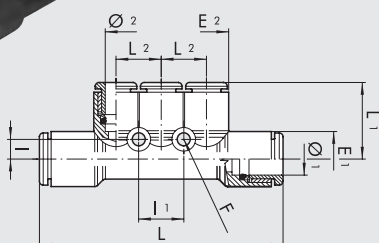
Código	Ref.	Ø1	Ø2	E1	E2	L	L1	L2	I	I1	F
2L42001	RL42	4	4	9.2	9.2	28.8	17.9	8.7	8	21.3	3.3
2L42002	RL42	4	6	9.2	11.3	31.3	17.9	8.7	8	21.3	3.3
2L42004	RL42	6	6	11.3	11.3	33.4	22.6	11.3	9.5	25.6	3.3
2L42005	RL42	6	8	11.3	14	34.8	22.6	11.3	9.5	25.6	3.3

Y DOBLE TECNOPOLÍMERO ENTRADA ROSCADO (R43)



Código	Ref.	Ø1	F	E1	E	Ch	P	L	L1	L2	I	I1	F1
2L43001	RL43	4	M5	9.2	8	9	4	35.5	17.9	8.7	8	21.3	3.3
2L43002	RL43	4	1/8	9.2	14	12	6	41.6	17.9	8.7	8	21.3	3.3
2L43003	RL43	4	1/4	9.2	18	14	8	44.6	17.9	8.7	8	21.3	3.3
2L43008	RL43	6	1/8	11.3	14	12	6	43.7	22.6	11.3	9.5	25.6	3.3
2L43009	RL43	6	1/4	11.3	18	14	8	46.7	22.6	11.3	9.5	25.6	3.3

COLECTOR MÚLTIPLE TECNOPOLÍMERO (R44)



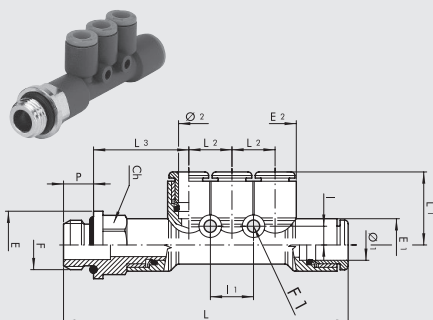
Código	Ref.	Ø1	Ø2	E1	E2	L	L1	L2	I	I1	F
2L44001	RL44	6	4	11.3	9.2	53.2	17.2	9.4	4.3	9.4	3.3
2L44003	RL44	8	6	14	11.3	61.4	19.6	11.5	5	11.5	3.3

RACORES AUTOMÁTICOS DE TECNOPOLÍMERO PARA TUBOS DE mm Y ROSCAS G (BSP) o MÉTRICAS

RACORES

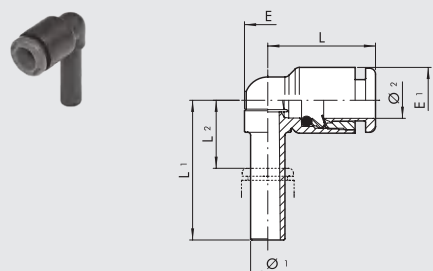


COLECTOR MÚLTIPLE ENTRADA ROSCADO TECNOPOLÍMERO (R45)



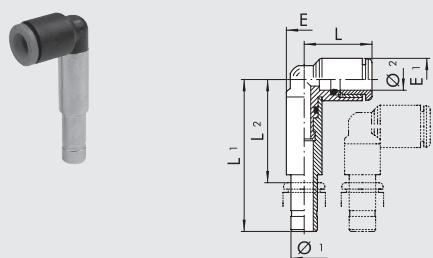
Código	Ref.	F	Ø1	Ø2	E1	E2	E	Ch	P	L	L1	L2	L3	I	I1	F1
2L45001	RL45	1/8	6	4	11.3	9.2	14	12	6	63.5	17.2	9.4	21.5	4.3	9.4	3.3
2L45002	RL45	1/4	6	4	11.3	9.2	18	14	8	66.5	17.2	9.4	22.5	4.3	9.4	3.3
2L45007	RL45	1/8	8	6	14	11.3	15	14	6	71.2	19.6	11.5	23	5	11.5	3.3
2L45008	RL45	1/4	8	6	14	11.3	18	14	8	75.6	19.6	11.5	25.4	5	11.5	3.3
2L45009	RL45	3/8	8	6	14	11.3	22	17	9	77.2	19.6	11.5	26	5	11.5	3.3

CODO DE ACOPLAMIENTO RÁPIDO (R46)



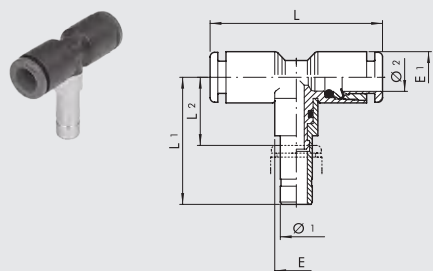
Código	Ref.	Ø1	Ø2	L	L1	L2	E	E1
2L46001	RL46	4	4	16	22.5	8.1	6.8	9.2
2L46002	RL46	6	6	18.5	24	8.4	8	11.3
2L46003	RL46	8	8	21.2	28.5	11.3	10	13.8
2L46004	RL46	10	10	23.3	32	13.3	12.5	16

CODO DE ACOPLAMIENTO RÁPIDO PROLONGADO (R47)



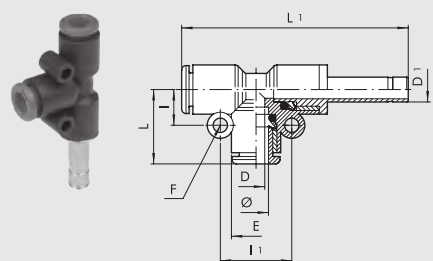
Código	Ref.	Ø1	Ø2	L	L1	L2	E	E1
2L47001	RL47	4	4	15.5	36.9	23.4	7.7	9.2
2L47002	RL47	6	6	18.1	40.6	25.9	9.3	11.3
2L47003	RL47	8	8	19.3	44.9	28.8	9.7	13.8

T DE ACOPLAMIENTO RÁPIDO CENTRAL (R48)



Código	Ref.	Ø1	Ø2	L	L1	L2	E	E1
2L48001	RL48	4	4	32	22.5	8.1	6.8	9.2
2L48002	RL48	6	6	37	37.5	16.4	9.7	11.3
2L48003	RL48	8	8	42.4	28.5	11.3	10	13.8
2L48004	RL48	10	10	46.6	46	27.7	14	16

T DE ACOPLAMIENTO RÁPIDO LATERAL (R49)



Código	Ref.	Ø	L	L1	I	I1	E	D	D1	F
2L49001	RL49	4	16.7	47.4	7.2	14.4	9.2	2.5	4	3.3
2L49003	RL49	6	19	52.5	8.2	16.4	11.3	4.2	6	3.3
2L49004	RL49	8	21.4	58.4	9.6	19.2	13.8	6.2	8	3.3
2L49005	RL49	10	24.1	68.2	10.9	21.8	16	8.5	10	3.3
2L49006	RL49	12	25.8	74.1	12.5	25	19.5	10.5	12	3.3